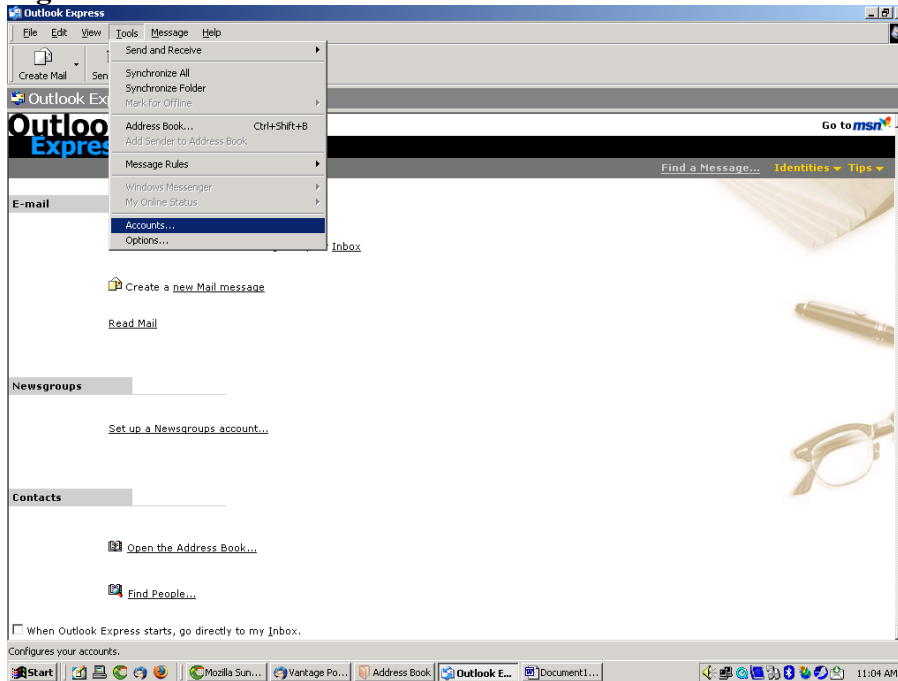


Instructions for Setting Up E-Mail

Step 1:

Open Outlook Express (Windows Mail on Vista) and choose **Tools -> Accounts** as shown in Fig 1.

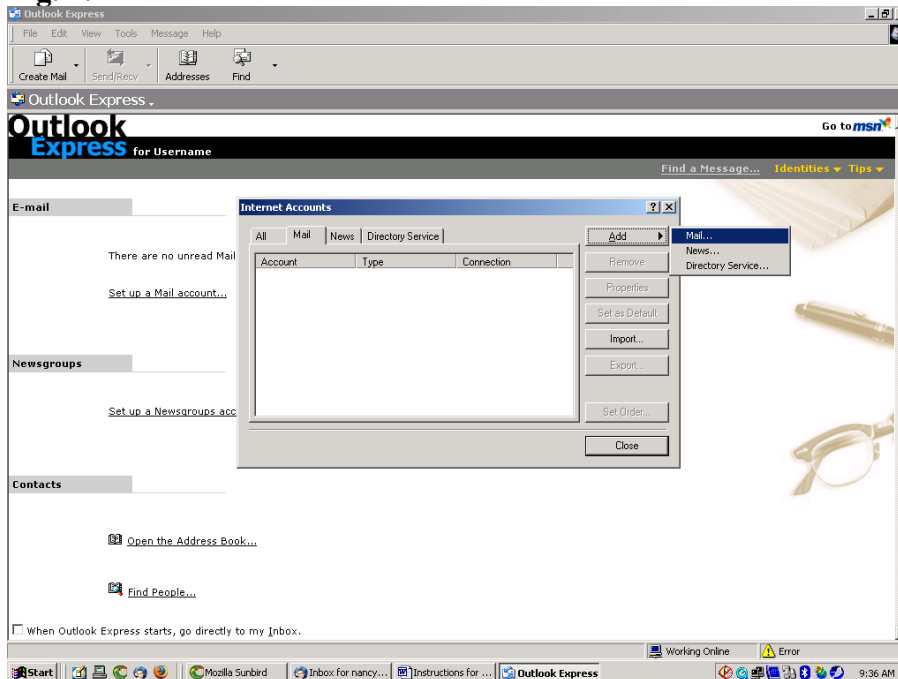
Fig. 1.



Step 2:

When the 'Internet Accounts' dialog box appears, choose **Add -> Mail** as shown in Fig. 2.

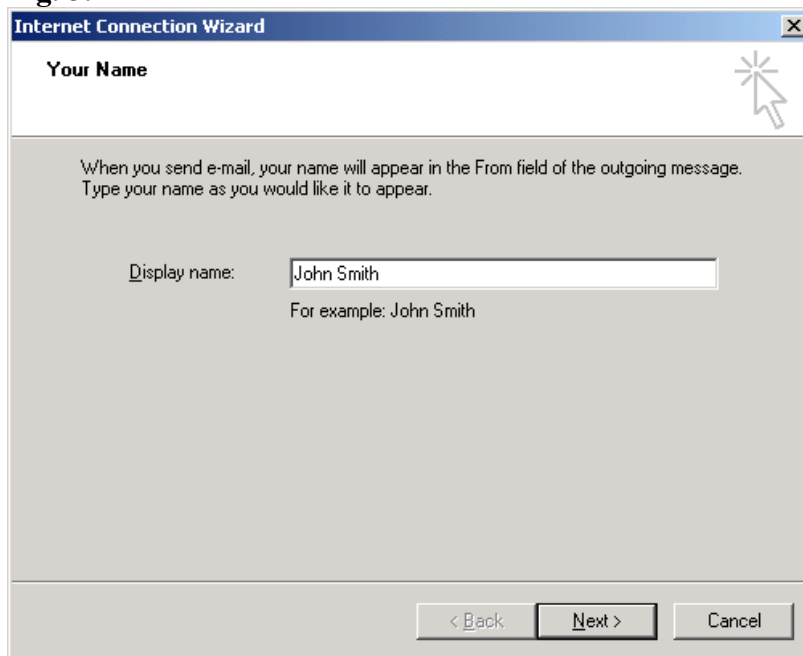
Fig. 2.



Step 3:

When the 'Internet Connection Wizard' dialog box appears, type in your display name [proper name] and choose **Next** as shown in Fig. 3.

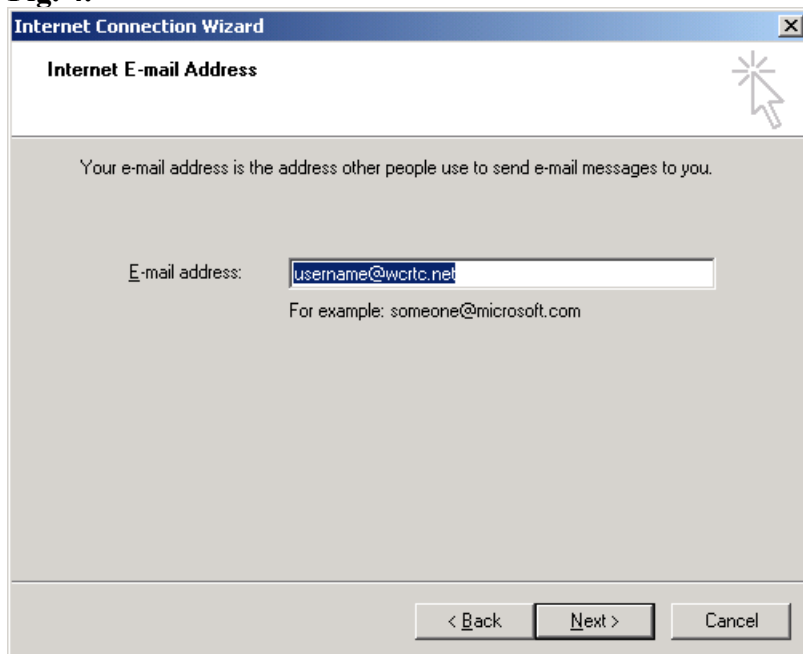
Fig. 3.



Step 4:

Type in your email address [username@wrtc.net] and choose **Next** as shown in Fig. 4.

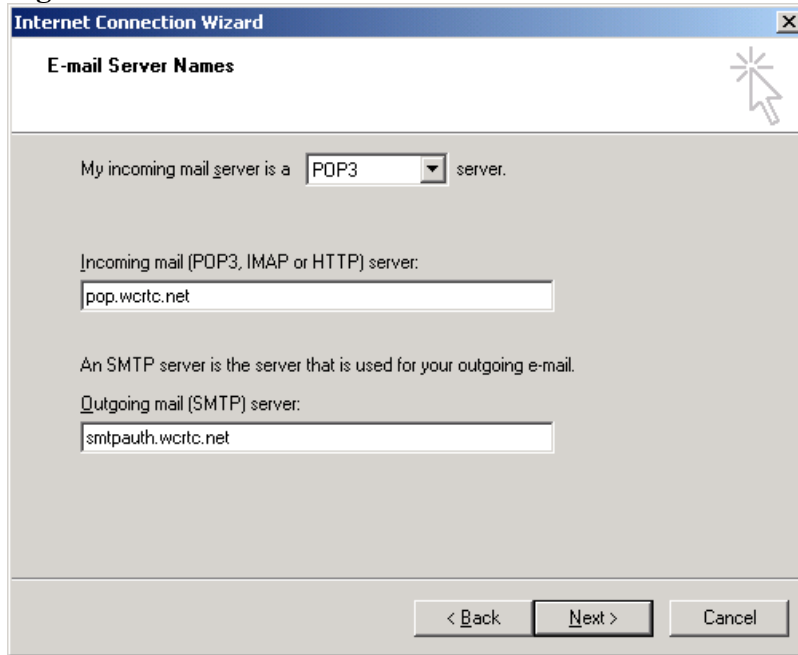
Fig. 4.



Step 5:

Confirm that POP3 is selected as incoming mail server. Type **pop.wrtc.net** under 'incoming mail server' and type **smtpauth.wrtc.net** under 'outgoing mail server' and choose **Next** as shown in Fig. 5.

Fig. 5.

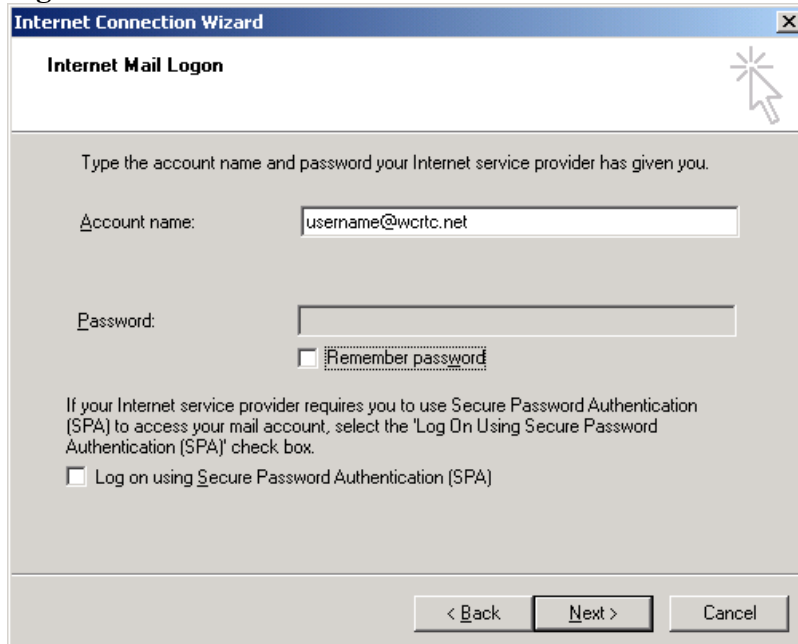


The screenshot shows the 'Internet Connection Wizard' dialog box with the 'E-mail Server Names' tab selected. The window title is 'Internet Connection Wizard'. The main title is 'E-mail Server Names'. Below the title bar, there is a text field for the incoming mail server type, which is set to 'POP3'. The text reads: 'My incoming mail server is a POP3 server.' Below this, there is a text field for the incoming mail server name, which contains 'pop.wrtc.net'. The text above this field reads: 'Incoming mail (POP3, IMAP or HTTP) server:'. Below that, there is a text field for the outgoing mail server name, which contains 'smtpauth.wrtc.net'. The text above this field reads: 'An SMTP server is the server that is used for your outgoing e-mail. Outgoing mail (SMTP) server:'. At the bottom of the dialog box, there are three buttons: '< Back', 'Next >', and 'Cancel'. A mouse cursor is pointing at the 'Next >' button.

Step 6:

Type in your **account name** [username@wrtc.net] and the **password** that you provided Tele-Media Solutions, and select **Next** as shown in Fig. 6.

Fig. 6.

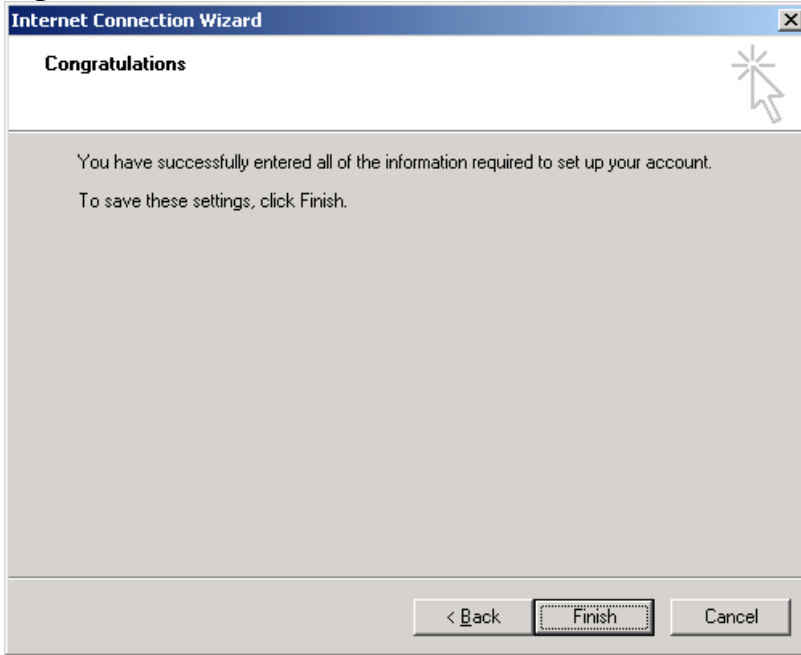


The screenshot shows the 'Internet Connection Wizard' dialog box with the 'Internet Mail Logon' tab selected. The window title is 'Internet Connection Wizard'. The main title is 'Internet Mail Logon'. Below the title bar, there is a text field for the account name, which contains 'username@wrtc.net'. The text above this field reads: 'Type the account name and password your Internet service provider has given you. Account name:'. Below that, there is a text field for the password, which is empty. The text above this field reads: 'Password:'. Below the password field, there is a checkbox labeled 'Remember password', which is unchecked. Below that, there is a checkbox labeled 'Log on using Secure Password Authentication (SPA)', which is also unchecked. The text above this checkbox reads: 'If your Internet service provider requires you to use Secure Password Authentication (SPA) to access your mail account, select the 'Log On Using Secure Password Authentication (SPA)' check box.'. At the bottom of the dialog box, there are three buttons: '< Back', 'Next >', and 'Cancel'. A mouse cursor is pointing at the 'Next >' button.

Step 7:

Choose **Finish** as shown in Fig. 7.

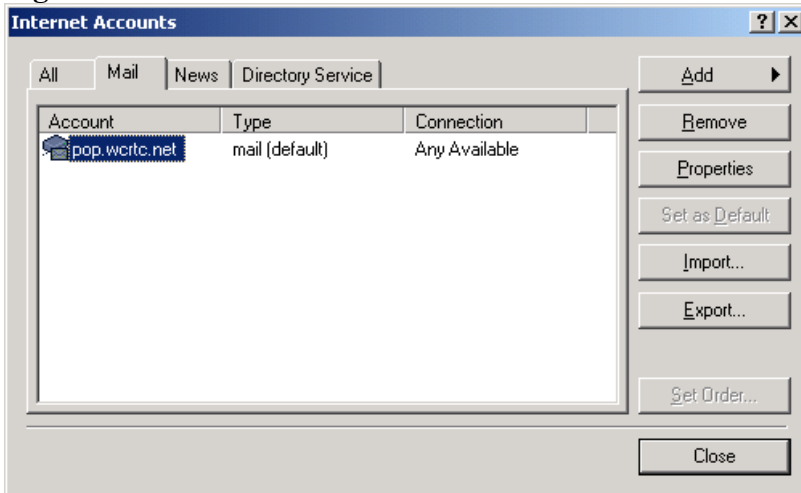
Fig. 7.



Step 8:

Highlight 'pop.wrtc.net' and select **Properties** as shown in Fig. 8.

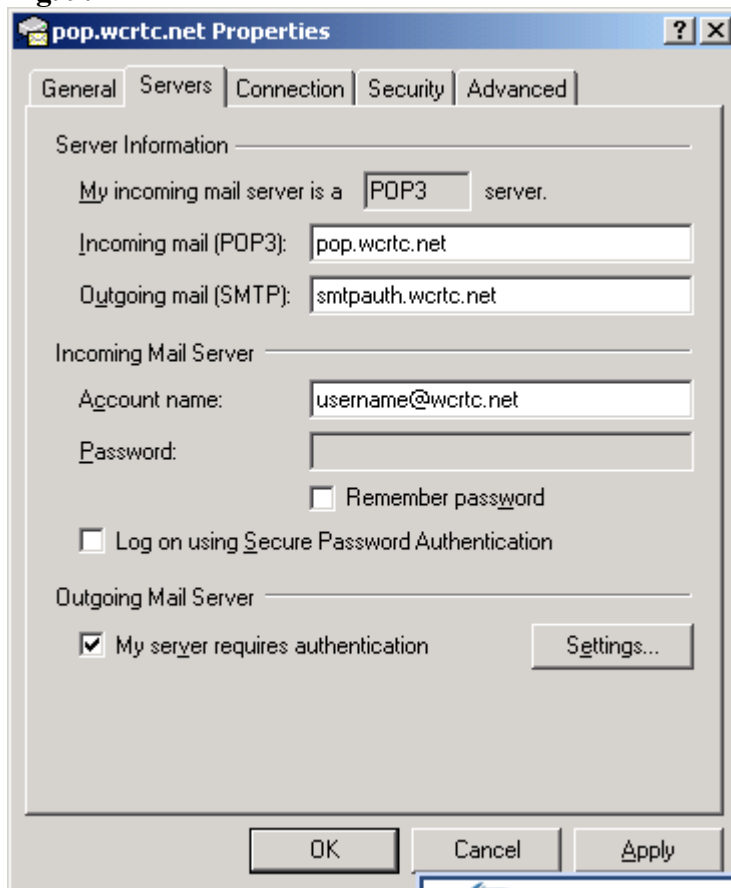
Fig. 8.



Step 9:

Select **Servers**, select the **'My server requires authentication'** check box and select **Settings** as shown in Fig. 9.

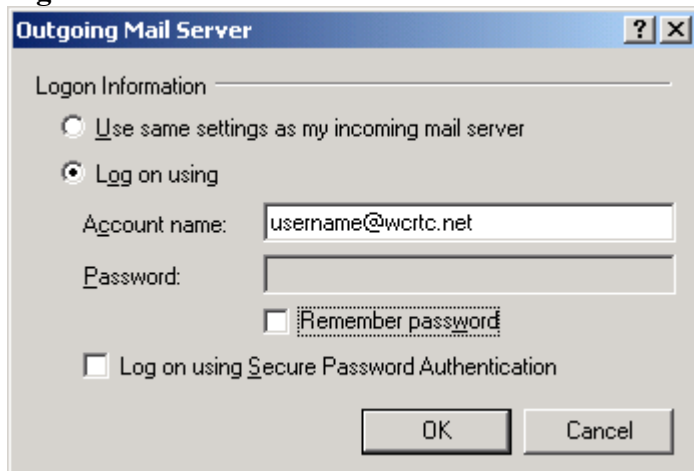
Fig. 9.



Step 10:

Select **'log on using'**, type in your **account name** [username@wcrtc.net], type in the **password** that you provided Tele-Media Solutions and select **OK** as shown in Fig. 10.

Fig. 10.



Step 11:

Select **OK** and **CLOSE**.

Step 12:

Select **Send/Recv** on the toolbar to receive e-mail messages.